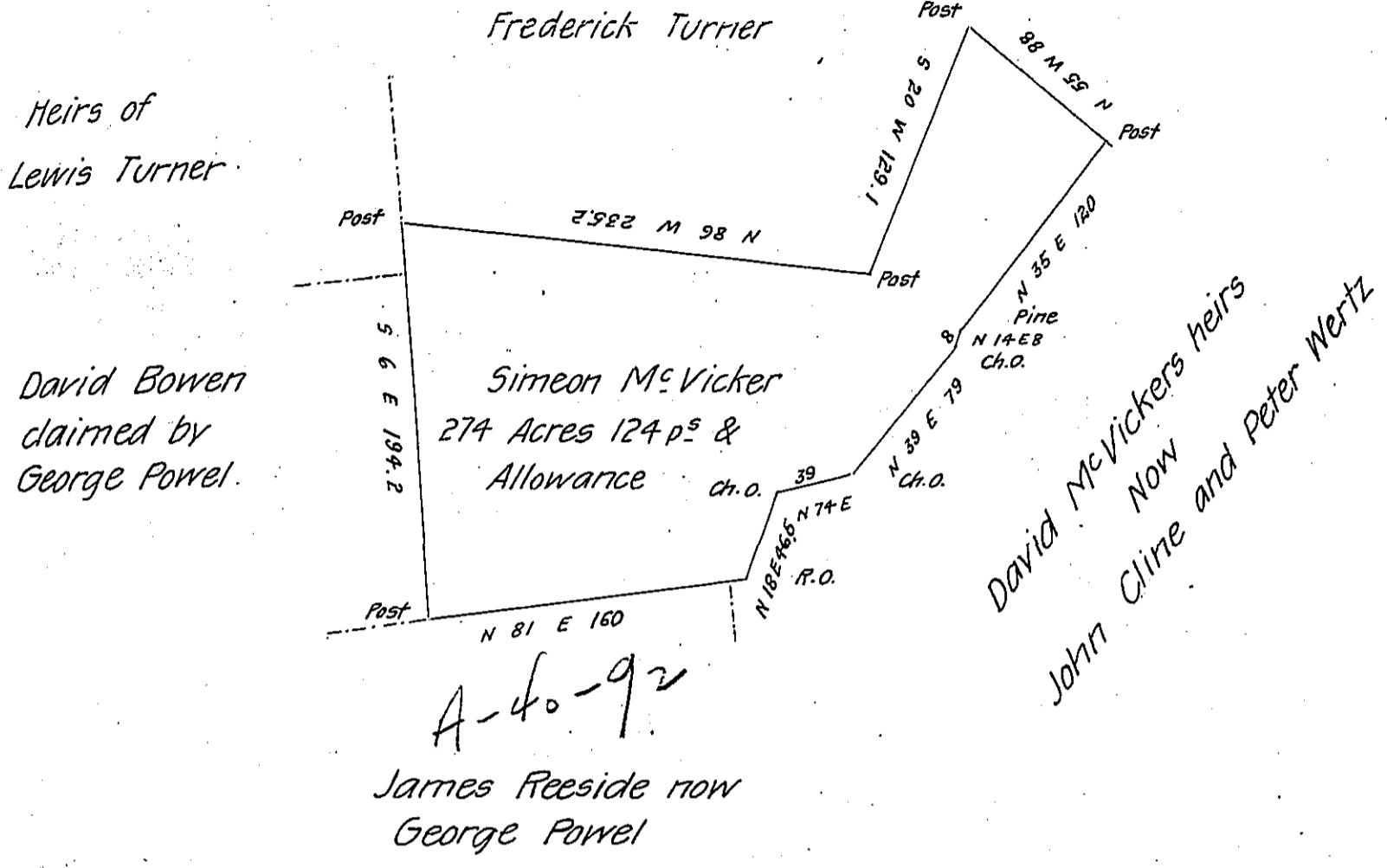


FORM No. 1.

Peter Knaufe  
Now  
Richard Knoup



Situate in Napier Township Bedford County on the North side of the Dry Ridge containing 274 acres 124 perches and allowance of six p. cent 8& Surveyed for Simeon McVicker the 16<sup>th</sup> day of November 1833 on Warrant dated the 14<sup>th</sup> day of October 1833

Robert Stuart D.S.

To Jacob Spangler Esq<sup>r</sup>

Surveyor General

Examined by me the 6<sup>th</sup> day of July 1839

Michael Reed D.S.

To Jacob Sallade Esq<sup>r</sup>

Surveyor General

IN TESTIMONY that the above is a copy of the original remaining on file in the Department of Internal Affairs of Pennsylvania, made conformably to an Act of Assembly approved the 16th day of February, 1833, I have hereunto set my Hand and caused the Seal of said Department to be affixed at Harrisburg, this thirteenth day of March 1906

*Quadrant Brown*  
Secretary of Internal Affairs.